

clever



20 St. Judes Road

, Plymouth, PL4 9HT

Guide price £270,000



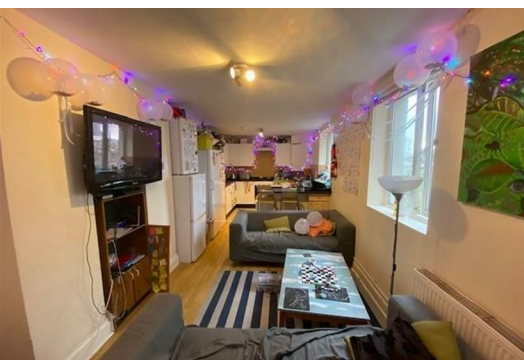
GUIDE £270,000 TO £280,000

Welcome to this charming property located on St. Judes Road in Plymouth! This terraced house boasts a generous 1,776 sq ft of living space, making it an ideal investment opportunity for those looking for a six letting room HMO property.

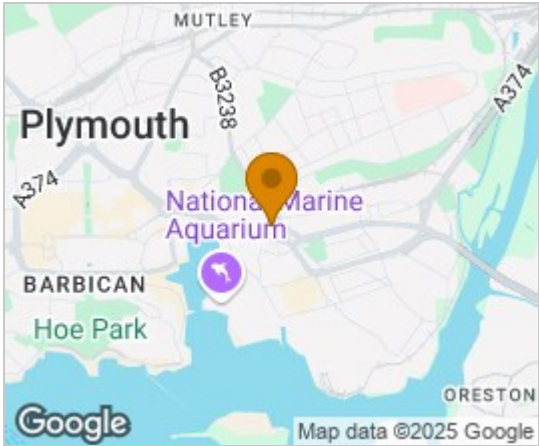
Upon entering, you'll be greeted by a spacious communal living area, perfect for socialising or relaxing after a long day. With six bedrooms and two bathrooms, there is ample space for residents to enjoy privacy and comfort.

One of the highlights of this property is the roof terrace, offering a lovely outdoor space to unwind and enjoy the fresh air. The property's proximity to Plymouth city centre and the university makes it a convenient location for both students and professionals.

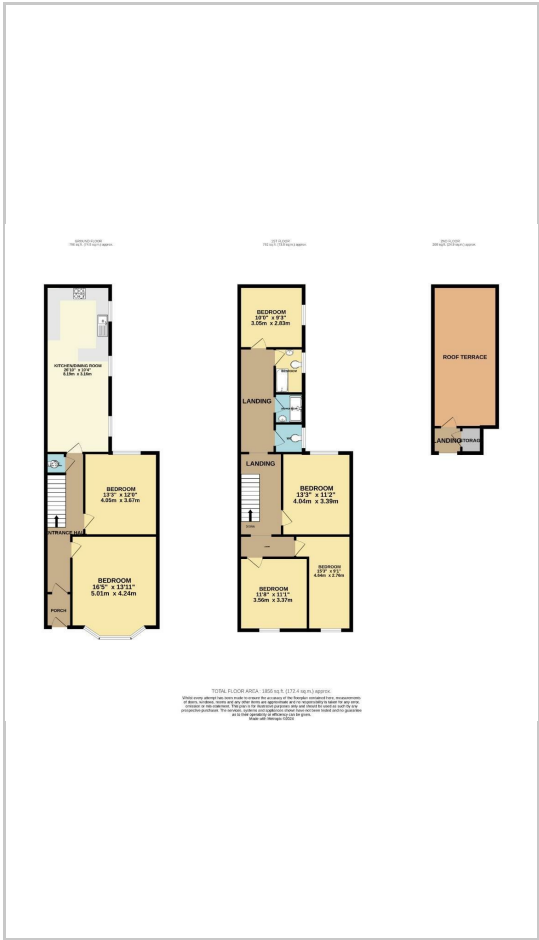
Currently producing a gross annual income of £35,000, this property presents a fantastic opportunity for those seeking a lucrative investment in the heart of Plymouth. Don't miss out on the chance to own this wonderful property with great earning potential! EPC D.



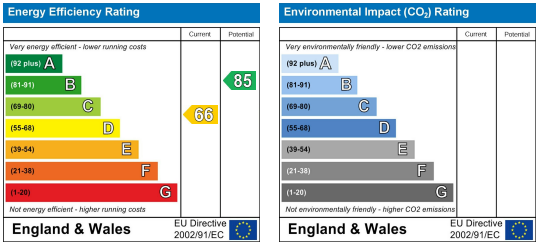
Area Map



Floor Plans



Energy Efficiency Graph



These particulars, whilst believed to be accurate are set out as a general outline only for guidance and do not constitute any part of an offer or contract. Intending purchasers should not rely on them as statements of representation of fact, but must satisfy themselves by inspection or otherwise as to their accuracy. No person in this firms employment has the authority to make or give any representation or warranty in respect of the property.